

- NOTES:**
1. ALL DIMENSIONS IN METRES UNLESS NOTED OTHERWISE.
  2. DO NOT SCALE. USE FIGURED DIMENSIONS ONLY.
  3. DIMENSIONS FOR PLANNING PURPOSES ONLY, NOT FOR BID OR CONSTRUCTION.
  4. ORDNANCE SURVEY GRID MAP SHEET REFERENCE 4852, 4914.
  5. PORTIONS OF ORDNANCE SURVEY MAPPING HAVE BEEN OMITTED FOR CLARITY.
  6. REPRODUCED FROM THE ORDNANCE SURVEY BY PERMISSION OF THE GOVERNMENT. OS LICENCE NO. W900407.
  7. LAND LEVELS SHOWN RELATE TO ORDNANCE DATUM (A1980) UNLESS OTHERWISE NOTED.
  8. CONTOURS ARE TAKEN FROM TOPOGRAPHICAL SURVEY BY MERRYS SURVEYS LTD, AUGUST 2000 AND ARE TO ORDNANCE DATUM (A1980).
  9. CO-ORDINATES SHOWN ARE TO IRISH NATIONAL GRID IN METRES.

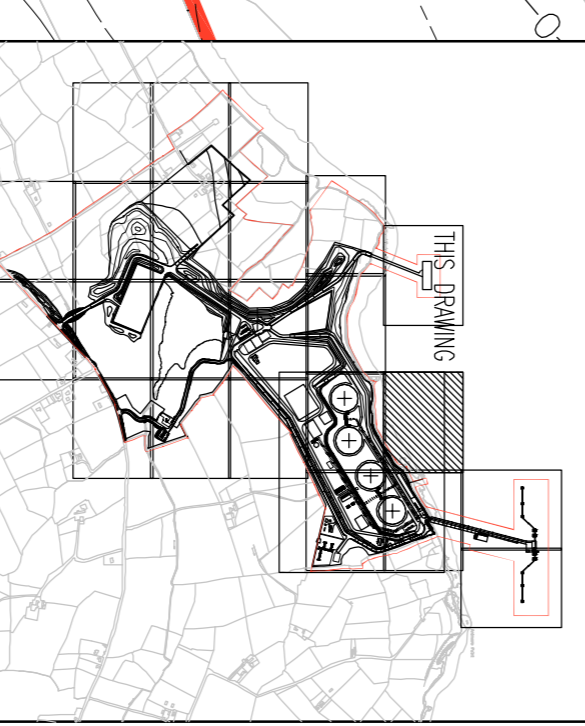
REFER TO DRAWING C 042 FOR CONTINUATION

REFER TO DRAWING C-038 FOR CONTINUATION

Rev.	Date	By	Description	Issd By
PL1	24.08.07	EG	ISSUED FOR PLANNING	MD

Drawing Status  
**FOR PLANNING**

KEYPLAN



Job Title  
**SHANNON LNG LTD.:  
SHANNON LNG TERMINAL**

Drawing Title  
**SITE LAYOUT PLAN  
SHEET 20 OF 24**



**ARUP**  
15 Peter Paul Street, Cork  
Tel: 01 846 2730 Fax: 01 847246  
SHANNON LNG  
CORK IRELAND

Scale: 1:500  
Checked: M. DALY Approved: E. LYNCH Date: JULY 2007  
Job No: C1676 Drawing No: C 041 Rev: PL1

BOUNDARY TO FORESHORE IS HIGH WATER MARK AS PER DIGITAL OS MAP, DATED JAN 07

