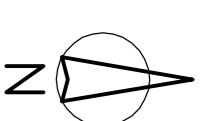


REFER TO DRAWING C 024 FOR CONTINUATION

LANDOWN AREA DURING CONSTRUCTION
(CRUSHED STONE SURFACE AT EXISTING GROUND LEVEL)

REFER TO DRAWING C 029 FOR CONTINUATION

LANDOWN AREA DURING CONSTRUCTION
(CRUSHED STONE SURFACE)



NOTES:

1. ALL DIMENSIONS IN METRES UNLESS NOTED OTHERWISE.
2. DO NOT SCALE. USE FIGURED DIMENSIONS ONLY.
3. DRAWINGS FOR PLANNING PURPOSES ONLY, NOT FOR BID OR CONSTRUCTION.
4. ORDNANCE SURVEY MAP SHEET REFERENCE 483, 4914.
5. PORTIONS OF ORDNANCE SURVEY MAPS HAVE BEEN OMITTED FOR CLARITY.
6. REPRODUCED FROM THE ORDNANCE SURVEY BY PERMISSION OF THE GOVERNMENT, OS LICENCE NO. WPO04407.
7. LAND LEVELS SHOWN RELATE TO ORDNANCE DATUM MAIN HEAD UNLESS OTHERWISE NOTED.
8. CONTOURS ARE TAKEN FROM TOPOGRAPHICAL SURVEY BY MERRICK'S SURVEYS LTD., AUGUST 2006 AND ARE TO ORDNANCE DATUM MAIN HEAD.
9. OS-ORDINATES SHOWN ARE TO IRISH NATIONAL GRID IN METRES.

LEGEND:

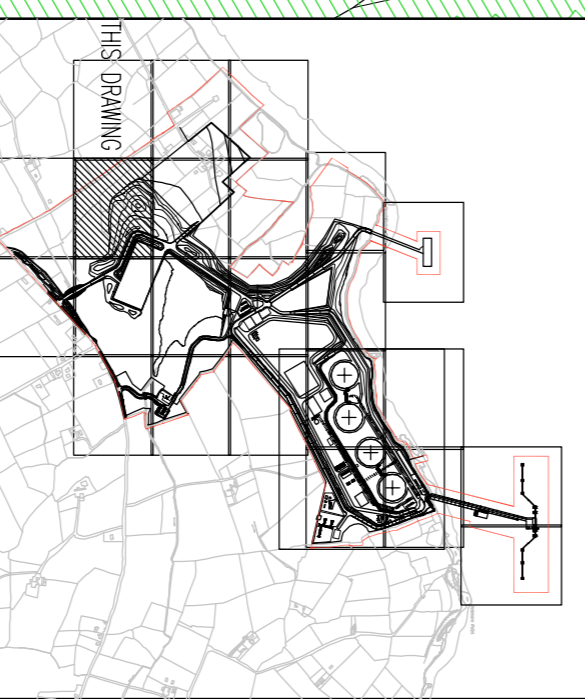
AREA FOR LANDSCAPE PLANNING (refer to drawing C011 for details)

REFER TO DRAWING C 026 FOR CONTINUATION

FOR PLANNING

KEEP PLAN

| Rev. | Date | By | Description | Issued By |
|------|----------|----|---------------------|-----------|
| PL1 | 24/07/07 | EG | ISSUED FOR PLANNING | MD |



SHANNON LNG LTD.:
SHANNON LNG TERMINAL

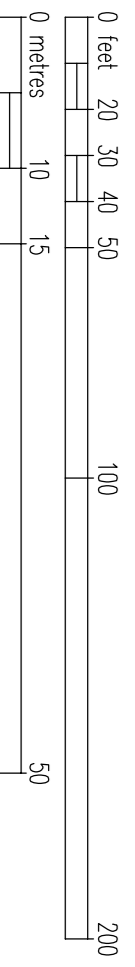
SITE LAYOUT PLAN
SHEET 4 OF 24



ARUP
15 Great Portland Street, London, W1G 0AL, UK
Tel: +44 (0)20 7466 2000 Fax: +44 (0)20 7466 2001
www.arup.com

Scale: 1:500
Drawn: M. DALY
Checked: E. LYNCH
Date: JULY 2007

Job No: C1676
Drawing No: C 025
Rev: PL1



2.9m HIGH CHAINLINK FENCE WITH BARBED WIRE

SITE BOUNDARY

REFER TO DRAWING C 022 FOR CONTINUATION

02

02

51

15

10

20

20

20

20

20

20